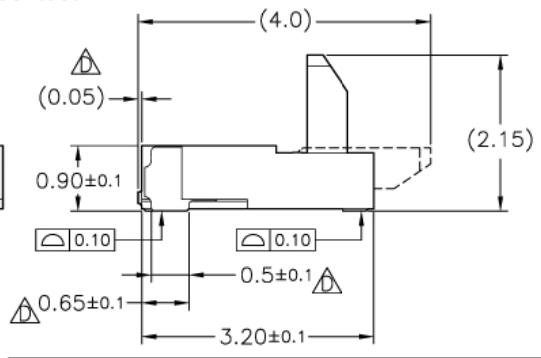
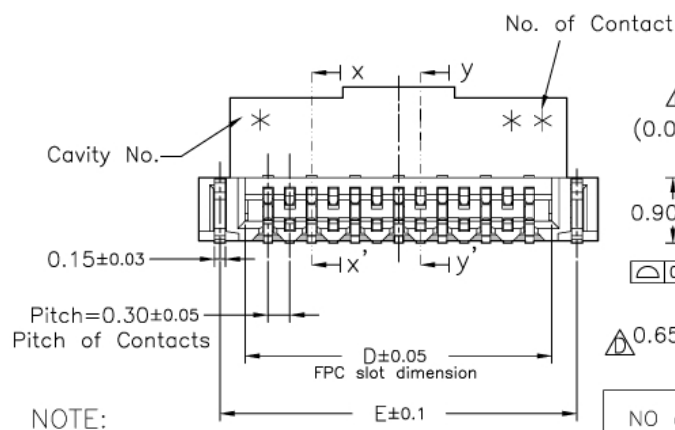
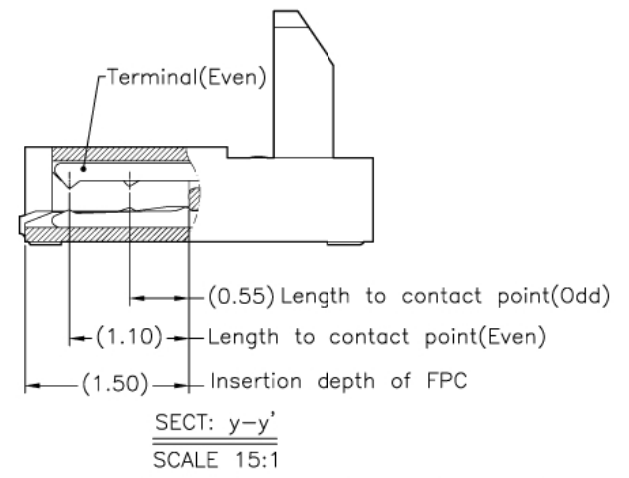
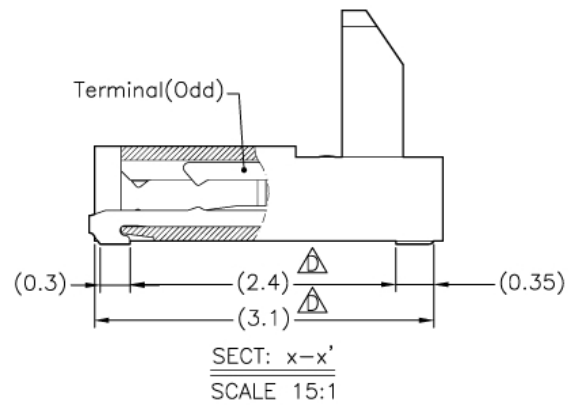
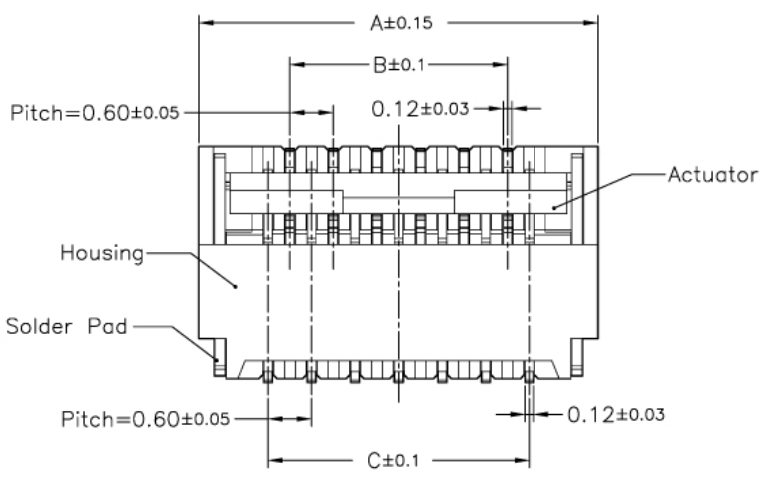


REV.	ECO NO.	DATE	SIGN	DESCRIPTION
B	ECN093201	20090803	Eason	Modify 09,11,49 pin tape width & Part NO. TAXX=>TAGF
C	0981224-01	20091224	Eason	Modify look for 57~71 pin
D	ECN100501	20100506	Eason	1.Modify drawing. 2.Create carton drawing.



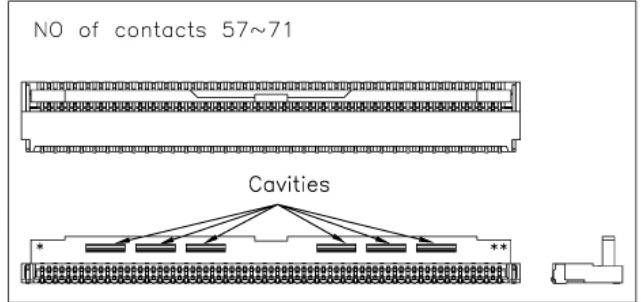
No. of Contacts	Part Number	DIM. A	DIM. B	DIM. C	DIM. D	DIM. E
9	BL143-09RU	4.3	1.8	2.4	3.03	3.72
11	BL143-11RU	4.9	2.4	3.0	3.63	4.32
13	BL143-13RU	5.5	3.0	3.6	4.23	4.92
15	BL143-15RU	6.1	3.6	4.2	4.83	5.52
17	BL143-17RU	6.7	4.2	4.8	5.43	6.12
19	BL143-19RU	7.3	4.8	5.4	6.03	6.72
21	BL143-21RU	7.9	5.4	6.0	6.63	7.32
23	BL143-23RU	8.5	6.0	6.6	7.23	7.92
25	BL143-25RU	9.1	6.6	7.2	7.83	8.52
27	BL143-27RU	9.7	7.2	7.8	8.43	9.12
29	BL143-29RU	10.3	7.8	8.4	9.03	9.72
31	BL143-31RU	10.9	8.4	9.0	9.63	10.32
33	BL143-33RU	11.5	9.0	9.6	10.23	10.92
35	BL143-35RU	12.1	9.6	10.2	10.83	11.52
37	BL143-37RU	12.7	10.2	10.8	11.43	12.12
39	BL143-39RU	13.3	10.8	11.4	12.03	12.72
41	BL143-41RU	13.9	11.4	12.0	12.63	13.32
43	BL143-43RU	14.5	12.0	12.6	13.23	13.92
45	BL143-45RU	15.1	12.6	13.2	13.83	14.52
49	BL143-49RU	16.3	13.8	14.4	15.03	15.72
51	BL143-51RU	16.9	14.4	15.0	15.63	16.32
57	BL143-57RU	18.7	16.2	16.8	17.43	18.12
61	BL143-61RU	19.9	17.4	18.0	18.63	19.32
67	BL143-67RU	21.7	19.2	19.8	20.43	21.12
71	BL143-71RU	22.9	20.4	21.0	21.63	22.32

NOTE:  
 1.MATERIAL:  
 HOUSING:LCP(UL 94V-0)  
 ACTUATOR:LCP(UL 94V-0)  
 TERMINAL:PHOSPHOR BRONZE  
 STOPPER:PHOSPHOR BRONZE

2.PLATING:  
 TERMINAL:SEE ORDERING INFORMATION  
 STOPPER:TIN OVER NICKEL(LEAD FREE)

3.PART NO.:  
**BL143-xx RU - TA GF**  
 SERIES                      NO. OF CONTACTS  
 PACKAGE  
 TA-EMBOSSED TAPE  
 RIGHT ANGLE(UPPER CONTACT TYPE)  
 GF: GOLD 1u"~3u" OVER NICKEL

4.RATING:  
 OPERATING VOLTAGE:30Vrms AC  
 CURRENT RATING:0.2A  
 OPERATING TEMPERATURE:-55°C ~ +85°C



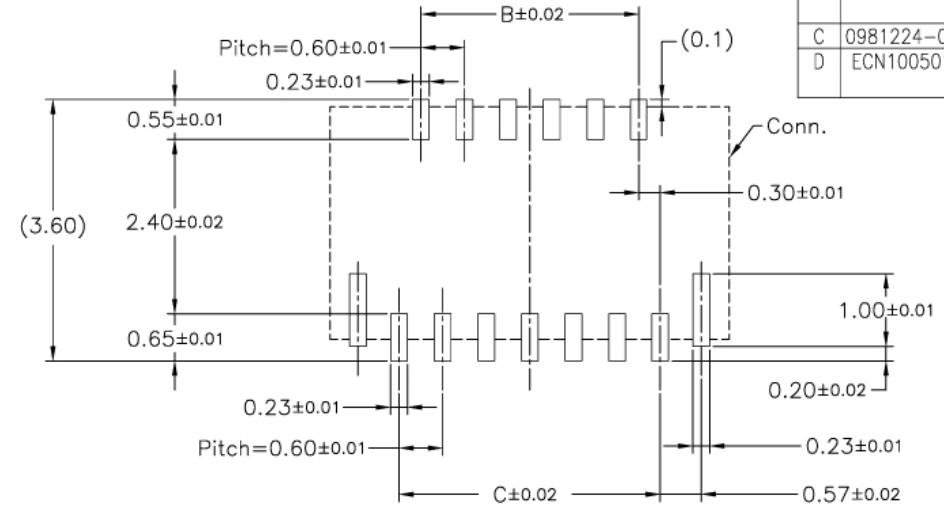
TOLERANCE UNLESS SPECIFIED	SHEET 1/5	DR. BY Eason	MATERIAL SEE NOTE 1.
LINEAR	ANGLE	SCALE 10/1	CHK. BY Robbie
XX XX	X' XX	UNIT mm	APP. BY Robbie
XXX XX	.XX' XX		FINISH SEE NOTE 2.
			PART NO. SEE NOTE 3.

	TITLE	0.3mm Pitch FPC Conn. (H=0.9)
	DWG NO.	BL143-xxRU-TAGF

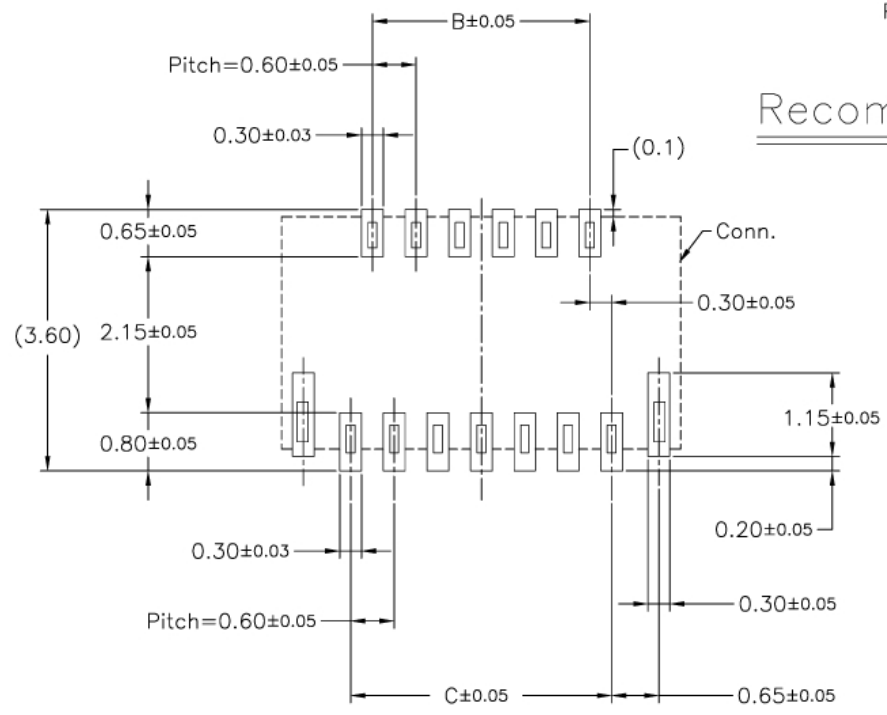
本部品不含有環境管理物質規定之有害物質

[MANAGEMENT REGULATIONS FOR THE RESTRICTIVELY-USED SUBSTANCES INCLUDED IN PARTS AND DEVICES]

REV.	ECO NO.	DATE	SIGN	DESCRIPTION
B	ECN093201	20090803	Eason	Modify 09,11,49 pin tape width & Part NO. TAXX=>TAGF
C	0981224-01	20091224	Eason	Modify look for 57~71 pin
D	ECN100501	20100506	Eason	1.Modify drawing. 2.Create carton drawing.



Recommended metal mask pattern(thickness 0.1mm)

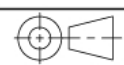


FPC/FFC INSERT DIRECTION

PCB Layout

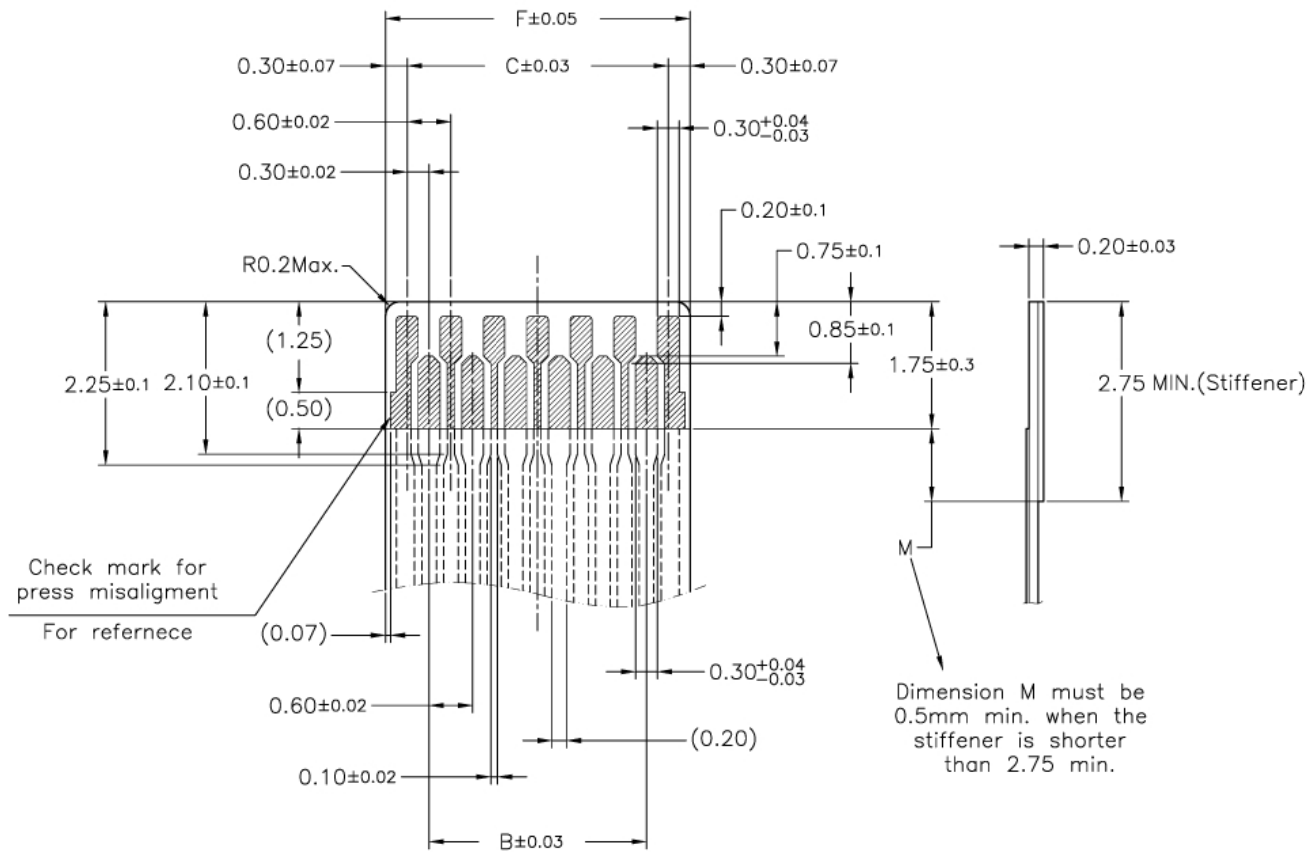
No.of Contacts	Part Number	DIM. B	DIM. C
9	BL143-09RU	1.8	2.4
11	BL143-11RU	2.4	3.0
13	BL143-13RU	3.0	3.6
15	BL143-15RU	3.6	4.2
17	BL143-17RU	4.2	4.8
19	BL143-19RU	4.8	5.4
21	BL143-21RU	5.4	6.0
23	BL143-23RU	6.0	6.6
25	BL143-25RU	6.6	7.2
27	BL143-27RU	7.2	7.8
29	BL143-29RU	7.8	8.4
31	BL143-31RU	8.4	9.0
33	BL143-33RU	9.0	9.6
35	BL143-35RU	9.6	10.2
37	BL143-37RU	10.2	10.8
39	BL143-39RU	10.8	11.4
41	BL143-41RU	11.4	12.0
43	BL143-43RU	12.0	12.6
45	BL143-45RU	12.6	13.2
49	BL143-49RU	13.8	14.4
51	BL143-51RU	14.4	15.0
57	BL143-57RU	16.2	16.8
61	BL143-61RU	17.4	18.0
67	BL143-67RU	19.2	19.8
71	BL143-71RU	20.4	21.0

TOLERANCE UNLESS SPECIFIED		SHEET 2/5	DR. BY Eason	MATERIAL
LINEAR	ANGLE	SCALE 10/1	CHK. BY Robbie	FINISH
X XX	X XX	UNIT mm	APP. BY Robbie	PART NO.
XX XX	X XX			
XXXX	XX XX			



TITLE	0.3mm Pitch FPC Conn. (H=0.9)
DWG NO.	BL143-xxRU-TAGF

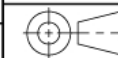
REV.	ECO NO.	DATE	SIGN	DESCRIPTION
B	ECN093201	20090803	Eason	Modify 09,11,49 pin tape width & Part NO. TAXX=>TAGF
C	0981224-01	20091224	Eason	Modify look for 57~71 pin
D	ECN100501	20100506	Eason	1.Modify drawing. 2.Create carton drawing.



No.of Contacts	Part Number	DIM. B	DIM. C	DIM. F
09	BL143-09RU	1.8	2.4	3.0
11	BL143-11RU	2.4	3.0	3.6
13	BL143-13RU	3.0	3.6	4.2
15	BL143-15RU	3.6	4.2	4.8
17	BL143-17RU	4.2	4.8	5.4
19	BL143-19RU	4.8	5.4	6.0
21	BL143-21RU	5.4	6.0	6.6
23	BL143-23RU	6.0	6.6	7.2
25	BL143-25RU	6.6	7.2	7.8
27	BL143-27RU	7.2	7.8	8.4
29	BL143-29RU	7.8	8.4	9.0
31	BL143-31RU	8.4	9.0	9.6
33	BL143-33RU	9.0	9.6	10.2
35	BL143-35RU	9.6	10.2	10.8
37	BL143-37RU	10.2	10.8	11.4
39	BL143-39RU	10.8	11.4	12.0
41	BL143-41RU	11.4	12.0	12.6
43	BL143-43RU	12.0	12.6	13.2
45	BL143-45RU	12.6	13.2	13.8
49	BL143-49RU	13.8	14.4	15.0
51	BL143-51RU	14.4	15.0	15.6
57	BL143-57RU	16.2	16.8	17.4
61	BL143-61RU	17.4	18.0	18.6
67	BL143-67RU	19.2	19.8	20.4
71	BL143-71RU	20.4	21.0	21.6

Applicable FPC

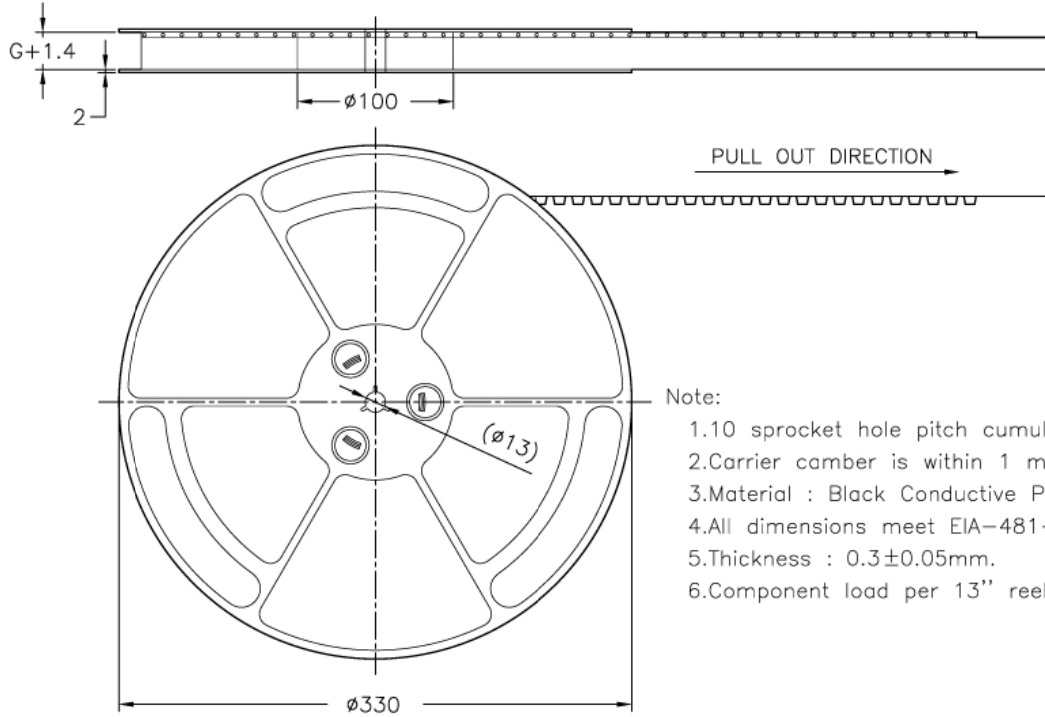
TOLERANCE UNLESS SPECIFIED		SHEET 3/5	DR. BY Eason	MATERIAL
LINEAR	ANGLE			
X XX	X° XX	SCALE 10/1	CHK. BY Robbie	FINISH
XX XX	.X° XX			
XXXX	.XX° XX	UNIT mm	APP. BY Robbie	PART NO.



TITLE	0.3mm Pitch FPC Conn. (H=0.9)
DWG NO.	BL143-xxRU-TAGF

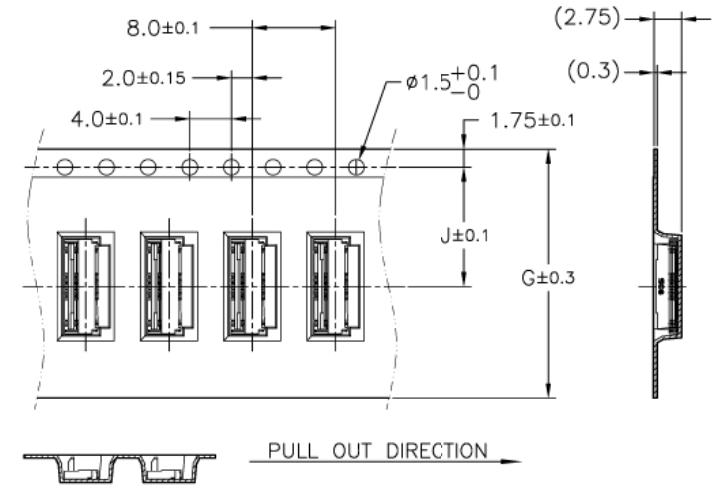
# EMBOSED TAPE PACKING BL143 SERIES

REV.	ECO NO.	DATE	SIGN	DESCRIPTION
B	ECN093201	20090803	Eason	Modify 09,11,49 pin tape width & Part NO. TAXX=>TAGF
C	0981224-01	20091224	Eason	Modify look for 57~71 pin
D	ECN100501	20100506	Eason	1.Modify drawing. 2.Create carton drawing.

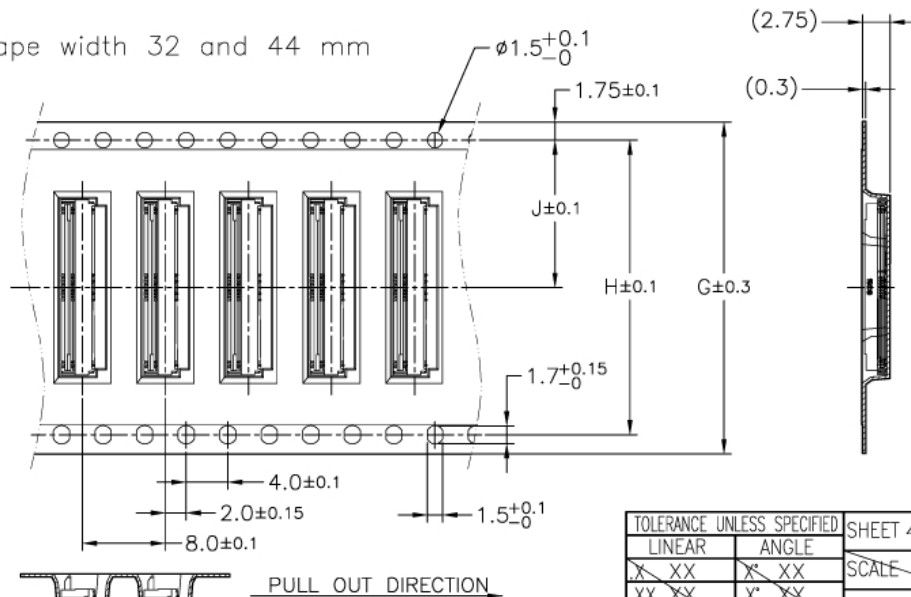


- Note:
- 1.10 sprocket hole pitch cumulative tolerance  $\pm 0.2$ .
  2. Carrier camber is within 1 mm in 250mm.
  3. Material : Black Conductive Polystyrene Alloy.
  4. All dimensions meet EIA-481-C requirements.
  5. Thickness :  $0.3 \pm 0.05$ mm.
  6. Component load per 13" reel : 3000pcs.

Tape width 12 , 16 and 24 mm



Tape width 32 and 44 mm



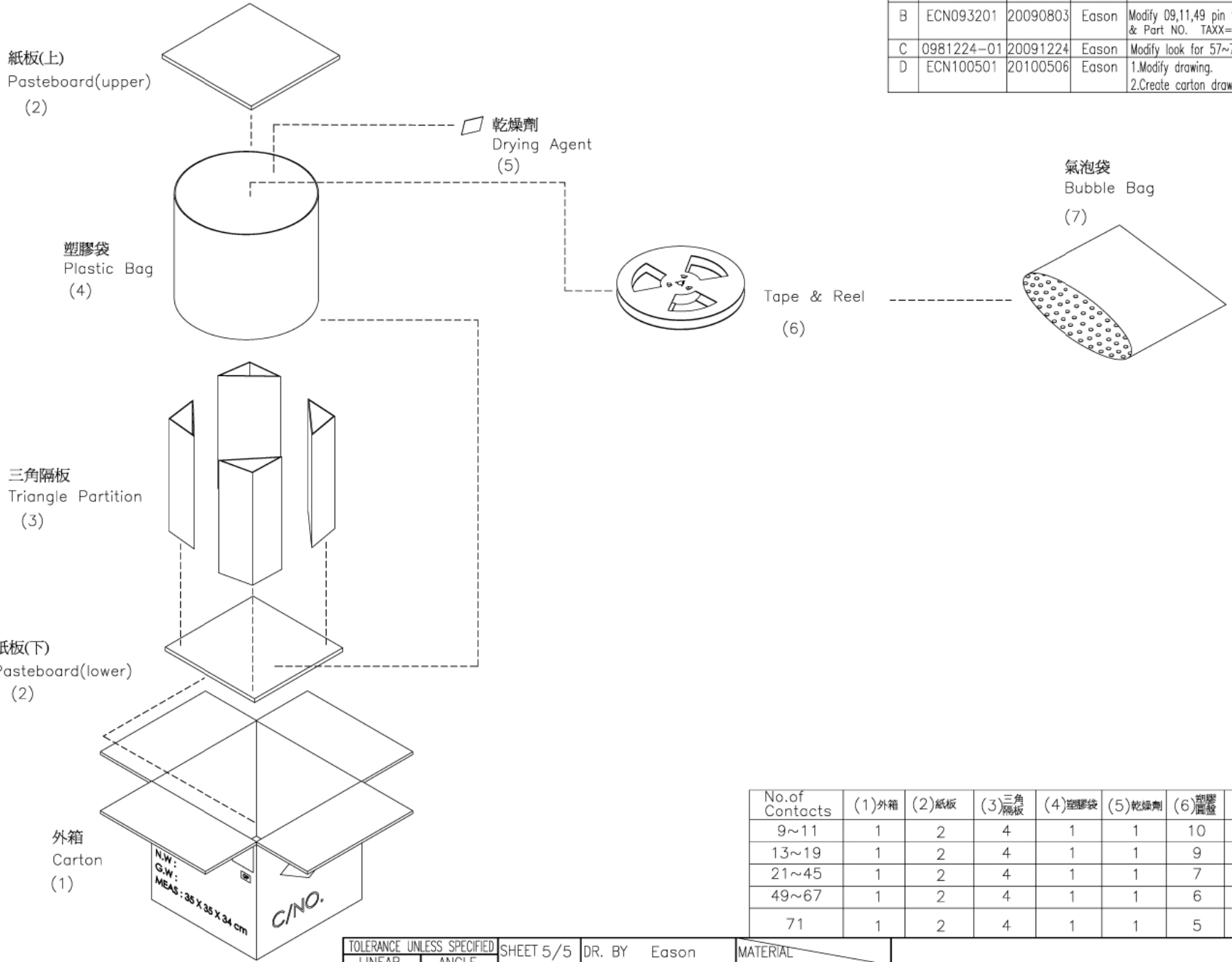
No.of Contacts	Part Number	DIM. G	DIM. H	DIM. J
09,11	BL143-09RU	12	—	5.5
	BL143-11RU			
13 ↓ 19	BL143-13RU	16	—	7.5
	BL143-19RU			
21 ↓ 45	BL143-21RU	24	—	11.5
	BL143-45RU			
49 ↓ 67	BL143-49RU	32	28.4	14.2
	BL143-67RU			
71	BL143-71RU	44	40.4	20.2

TOLERANCE UNLESS SPECIFIED		SHEET 4/5	DR. BY Eason	MATERIAL
LINEAR	ANGLE			
X XX	X XX	SCALE	CHK. BY Robbie	FINISH
XX XX	X XX			
XXXX	XX XX	UNIT mm	APP. BY Robbie	PART NO.



TITLE	0.3mm Pitch FPC Conn. (H=0.9)
DWG NO.	BL143-xxRU-TAGF

REV.	ECO NO.	DATE	SIGN	DESCRIPTION
B	ECN093201	20090803	Eason	Modify 09,11,49 pin tape width & Part NO. TAXX=>TAGF
C	0981224-01	20091224	Eason	Modify look for 57~71 pin
D	ECN100501	20100506	Eason	1.Modify drawing. 2.Create carton drawing.



No.of Contacts	(1)外箱	(2)紙板	(3)三角隔板	(4)塑膠袋	(5)乾燥劑	(6)帶盤	(7)氣泡袋
9~11	1	2	4	1	1	10	10
13~19	1	2	4	1	1	9	9
21~45	1	2	4	1	1	7	7
49~67	1	2	4	1	1	6	6
71	1	2	4	1	1	5	5

TOLERANCE UNLESS SPECIFIED		SHEET 5/5	DR. BY Eason	MATERIAL
LINEAR	ANGLE	SCALE	CHK. BY Robbie	FINISH
X XX	X XX	UNIT mm	APP. BY Robbie	PART NO.
XX XX	X XX			
XXXXX	.XX XX			

	TITLE	0.3mm Pitch FPC Conn. (H=0.9)
	DWG NO.	BL143-xxRU-TAGF

本品不含有環境管理物質規定之有害物質

[MANAGEMENT REGULATIONS FOR THE RESTRICTIVELY-USED SUBSTANCES INCLUDED IN PARTS AND DEVICES]